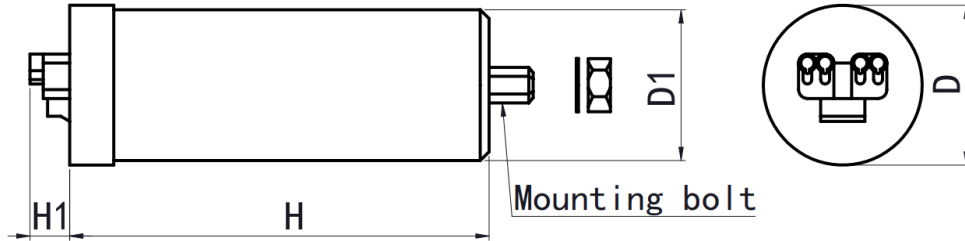


金属化聚丙烯膜灯具电容器 Metallized polypropylene film capacitor for lamps

外形图 Outline Drawing



特点

广泛用于荧光灯、高压汞灯、钠灯、金属卤素灯等以频率为 50Hz/60Hz 的交流电源供电的照明灯具中的变压器、电子镇流器的功率因数补偿，使灯具的功率因数 $\cos\phi \geq 0.9$ 。

Features

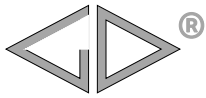
The capacitors are designed for lighting applications such as fluorescent lamps, high-pressure mercury vapor lamps, sodium lamps, and metal halide lamps. The capacitors are used for power factor compensation of transformers and magnetic ballasts in lamps with a frequency of 50 or 60Hz, which makes the power factor to achieve $\cos\phi \geq 0.9$.

安全认证 Safety Approvals

●		CQC (中国)	GB/T 18489-2008, type A, 2.0 μ F~50.0 μ F, 250Vac, 50Hz/60Hz, -40°C/85°C 证书号(Certificate No.): CQC0400009201
●		TUV Rheinland (德国)	EN 61048:2016, type A, 2.0 μ F~50.0 μ F, 250Vac, 50Hz/60Hz, -40°C/85°C 证书号(Certificate No.): R 50160499

技术要求 Specifications

引用标准 Reference Standard	GB/T 18489-2008(IEC 61048:2006) GB/T 18504-2001 (IEC 61049:1991)
额定电压 Rated Voltage (U_n)	250Vac
额定频率 Rated Frequency (f_n)	50Hz/60Hz
电容量范围 Capacitance Range (C_n)	2.0 μ F ~ 50.0 μ F
电容量偏差 Capacitance Tolerance	$\pm 5\%$ (J), $\pm 10\%$ (K)
额定最高温度(电容器表面温度, t_c) Rated Max. Temperature (on capacitor surface, t_c)	85°C
气候类别 Climatic Category	40/85/10
电容器类别 Type	Type A (self-healing parallel capacitor)
外壳类型 Case	Plastic or Aluminum
凝露 Condensation	Not permitted
耐电压(引线之间) Test Voltage Between Terminals	500Vac, 2s
耐电压(极壳之间) Test Voltage Between Terminals to Case	2 000Vac, 2s (max. leakage current: 0.5mA)
最高工作电压 Max. Operating Voltage	275Vac
额定电流 Rated Current (I_n)	0.0785 C_n (A) @ 50Hz 0.0942 C_n (A) @ 60Hz (Unit of C_n : μ F)
最大工作电流 Max. Operating Current	1.3 I_n
外壳防护等级 Degree of protection	IP00
最高使用海拔 Max Altitude	2 000m



C62

CBB60L series

电极端子 Terminals		Push in connector or insulated wires
连接线 Connecting Wires		Insulated rigid leads 0.5mm ² ~1.0mm ² , approx. stripped 6mm~7mm
安装 Installation	引出端形式 Terminal form	插入式端子 Insert terminal
		绝缘线剥线式 Insulate lead wire
	安装形式 Fixed style	底部螺栓 M8 Bottom-bolt M8
中部卡圈 Ring-clip in the middle of case		
最大安装扭矩 Max tightening torque		3N·m

■ 产品编码说明 Part number system

15 位产品代码如下：

The 15 digits part number is formed as follow:

1	2	3	4	5	6	7	8	9	10	11	12	13	14	15
C	6	2												

第 1~3 位	型号代码	Digit 1 to 3	Series code
	C62=CBB60L		C62=CBB60L
第 4~5 位	交流额定电压	Digit 4 to 5	AC rated voltage
	E2=250V		E2=250V
第 6~8 位	标称容量	Digit 6 to 8	Rated capacitance value
	举例: 505=50×10 ⁵ pF=5.0μF		for example: 505=50×10 ⁵ pF=5.0μF
第 9 位	容量偏差	Digit 9	Capacitance tolerance
	J=±5%, K=±10%		J=±5%, K=±10%
第 10~15 位	内部特征码	Digit 10 to 15	Internal use



■ 外形尺寸 Dimensions(mm)

250Vac								250Vac (Miniature Version)							
C _n (μF)	D ±2.0	D1 ±2.0	H ±3.0	H1 ±1.0	Mounting bolt	Discharge resistor	Part number	C _n (μF)	D ±2.0	D1 ±2.0	H ±3.0	H1 ±1.0	Mounting bolt	Discharge resistor	Part number
2.0	25	25	58	12	M8 x 10	0.5W, 1.2MΩ	C62E2205-*****	2.0	25	25	53	12	M8 x 10	0.5W, 1.2MΩ	C62E2205-*****
2.5	25	25	58	12	M8 x 10	0.5W, 1.2MΩ	C62E2255-*****	2.5	25	25	53	12	M8 x 10	0.5W, 1.2MΩ	C62E2255-*****
3.0	25	25	58	12	M8 x 10	0.5W, 1.2MΩ	C62E2305-*****	3.0	25	25	53	12	M8 x 10	0.5W, 1.2MΩ	C62E2305-*****
3.5	25	25	58	12	M8 x 10	0.5W, 1.2MΩ	C62E2355-*****	3.5	25	25	53	12	M8 x 10	0.5W, 1.2MΩ	C62E2355-*****
4.0	25	25	58	12	M8 x 10	0.5W, 1.2MΩ	C62E2405-*****	4.0	25	25	53	12	M8 x 10	0.5W, 1.2MΩ	C62E2405-*****
4.5	25	25	58	12	M8 x 10	0.5W, 1.2MΩ	C62E2455-*****	4.5	25	25	53	12	M8 x 10	0.5W, 1.2MΩ	C62E2455-*****
5.0	25	25	58	12	M8 x 10	0.5W, 1.2MΩ	C62E2505-*****	5.0	25	25	53	12	M8 x 10	0.5W, 1.2MΩ	C62E2505-*****
5.5	30	29	58	12	M8 x 10	0.5W, 1.2MΩ	C62E2555-*****	5.5	25	25	53	12	M8 x 10	0.5W, 1.2MΩ	C62E2555-*****
6.0	30	29	58	12	M8 x 10	0.5W, 1.2MΩ	C62E2605-*****	6.0	25	25	58	12	M8 x 10	0.5W, 1.2MΩ	C62E2605-*****
6.3	30	29	58	12	M8 x 10	0.5W, 1.2MΩ	C62E2635-*****	6.3	25	25	58	12	M8 x 10	0.5W, 1.2MΩ	C62E2635-*****
6.5	30	29	58	12	M8 x 10	0.5W, 1.2MΩ	C62E2655-*****	6.5	25	25	58	12	M8 x 10	0.5W, 1.2MΩ	C62E2655-*****
7.0	30	29	58	12	M8 x 10	0.5W, 1.2MΩ	C62E2705-*****	7.0	25	25	58	12	M8 x 10	0.5W, 1.2MΩ	C62E2705-*****
7.5	30	29	58	12	M8 x 10	0.5W, 1.2MΩ	C62E2755-*****	7.5	30	27	58	12	M8 x 10	0.5W, 1.2MΩ	C62E2755-*****
8.0	30	29	68	12	M8 x 10	0.5W, 1.2MΩ	C62E2805-*****	8.0	30	27	58	12	M8 x 10	0.5W, 1.2MΩ	C62E2805-*****
8.4	30	29	68	12	M8 x 10	0.5W, 1.2MΩ	C62E2845-*****	8.4	30	27	58	12	M8 x 10	0.5W, 1.2MΩ	C62E2845-*****
8.5	30	29	68	12	M8 x 10	0.5W, 1.2MΩ	C62E2855-*****	8.5	30	27	58	12	M8 x 10	0.5W, 1.2MΩ	C62E2855-*****
9.0	30	29	68	12	M8 x 10	0.5W, 1.2MΩ	C62E2905-*****	9.0	30	29	58	12	M8 x 10	0.5W, 1.2MΩ	C62E2905-*****
9.5	30	29	68	12	M8 x 10	0.5W, 1.2MΩ	C62E2955-*****	9.5	30	29	58	12	M8 x 10	0.5W, 1.2MΩ	C62E2955-*****
10	30	29	68	12	M8 x 10	0.5W, 1.2MΩ	C62E2106-*****	10	30	29	58	12	M8 x 10	0.5W, 1.2MΩ	C62E2106-*****
12	30	29	73	12	M8 x 10	0.5W, 1.2MΩ	C62E2126-*****	12	30	29	68	12	M8 x 10	0.5W, 1.2MΩ	C62E2126-*****
12.5	30	29	98	12	M8 x 10	0.5W, 1.2MΩ	C62E212E-*****	12.5	30	29	68	12	M8 x 10	0.5W, 1.2MΩ	C62E212E-*****
13	30	29	98	12	M8 x 10	0.5W, 1.2MΩ	C62E2136-*****	13	30	29	68	12	M8 x 10	0.5W, 1.2MΩ	C62E2136-*****
14	30	29	98	12	M8 x 10	0.5W, 1.2MΩ	C62E2146-*****	14	30	29	68	12	M8 x 10	0.5W, 1.2MΩ	C62E2146-*****
15	30	29	98	12	M8 x 10	0.5W, 1.2MΩ	C62E2156-*****	15	30	29	73	12	M8 x 10	0.5W, 1.2MΩ	C62E2156-*****
16	30	29	98	12	M8 x 10	0.5W, 1.2MΩ	C62E2166-*****	16	30	29	73	12	M8 x 10	0.5W, 1.2MΩ	C62E2166-*****
18	30	29	98	12	M8 x 10	0.5W, 1.2MΩ	C62E2186-*****	18	35	33	73	12	M8 x 10	0.5W, 1.2MΩ	C62E2186-*****
20	35	34	95	12	M8 x 10	0.5W, 1.2MΩ	C62E2206-*****	20	35	33	73	12	M8 x 10	0.5W, 1.2MΩ	C62E2206-*****
22	35	34	95	12	M8 x 10	0.5W, 1.2MΩ	C62E2226-*****	22	30	29	98	12	M8 x 10	0.5W, 1.2MΩ	C62E2226-*****
25	35	34	95	12	M8 x 10	0.5W, 0.75MΩ	C62E2256-*****	25	30	29	98	12	M8 x 10	0.5W, 0.75MΩ	C62E2256-*****
28	40	38	95	12	M8 x 10	0.5W, 0.75MΩ	C62E2286-*****	28	35	33	95	12	M8 x 10	0.5W, 0.75MΩ	C62E2286-*****
30	40	38	95	12	M8 x 10	0.5W, 0.75MΩ	C62E2306-*****	30	35	33	95	12	M8 x 10	0.5W, 0.75MΩ	C62E2306-*****
32	40	38	95	12	M8 x 10	0.5W, 0.75MΩ	C62E2326-*****	32	35	33	95	12	M8 x 10	0.5W, 0.75MΩ	C62E2326-*****
35	40	38	95	12	M8 x 10	0.5W, 0.75MΩ	C62E2356-*****	35	35	34	95	12	M8 x 10	0.5W, 0.75MΩ	C62E2356-*****
36	45	44	66	12	M8 x 10	0.5W, 0.75MΩ	C62E2366-*****	36	45	44	66	12	M8 x 10	0.5W, 0.75MΩ	C62E2366-*****
40	45	44	95	12	M8 x 10	0.5W, 0.75MΩ	C62E2406-*****	40	40	39	95	12	M8 x 10	0.5W, 0.47MΩ	C62E2406-*****
45	45	45	100	16	M8 x 12	0.5W, 0.75MΩ	C62E2456-*****	45	40	39	95	16	M8 x 12	0.5W, 0.47MΩ	C62E2456-*****
50	45	45	125	16	M8 x 12	0.5W, 0.75MΩ	162E2506-*****	50	45	45	95	16	M8 x 12	0.5W, 0.47MΩ	C62E2506-*****

备注 Note: 1. “-”表示容量偏差。 “-” =capacitance tolerance code, J=±5%, K=±10%.

2. “*****”表示内部特征码。 “*****” = Internal use.

3. 其它容量、尺寸系列可按用户需要商定。 Other values and dimensions are available on request.